

# Maggie MacIsaac

Chief Executive, Hampshire CCGs Partnership

Page 1

# Heather Hauschild

Chief Officer, West Hampshire CCG

**NHS Commissioning Update for Hampshire Health &  
Adult Social Care Select Committee**

20 June 2017

- **Hampshire CCG Partnership**

- Fareham & Gosport CCG, North Hampshire CCG, North East Hampshire and Farnham CCG, South Eastern Hampshire CCG (population 850,000)
- Purpose is to enable us to accelerate improvements in patient care, to be more effective, and to reduce duplication.

- **West Hampshire CCG**

- Serving a population of over 550,000 from Witchurch in the north to the New Forest in the south, encompassing Winchester, Andover, Romsey and Eastleigh and surrounding villages.
- Our care strategy 'changing the shape of care delivery' changes the focus from a reactive to a proactive care model. People are less dependent on hospital services as community and GP services are developed to enable people to help themselves maintain their health.

# Rationale for The Partnership

85 of the c200 CCGs in England now share a single Accountable Officer.  
Why did we choose to work together?

**CCGs provide a strong local focus, engaging clinicians and patients to redesign services.**



**Working together with one leadership team across our partnership we are also able to:**

- Have greater leverage & influence
- Work effectively with local authorities
- Bring a consistent commissioning voice
- Share talent and skills of clinicians, managers and lay members
- Reduce duplication
- Better support System Reform

**We embarked on a journey together in a spirit of partnership**

## Working together

---

- West Hampshire CCG and the Partnership working together, with Hampshire County Council, for the Hampshire population.
- Working together to deliver the Hampshire and Isle of Wight Sustainability and Transformation plan.
- Emphasis on improving services with communities in each locality, and acting together, with a single approach at county level.
- Developing effective STP governance structures across Hampshire
- Joint A&E delivery boards to consider hospital activity, management of patient flow and delayed transfers of care.
- Hosting services across Hampshire:
  - West Hampshire: Continuing Healthcare, Safeguarding, Mental Health
  - Partnership: Children, Ambulance Services

# The HIOW Sustainability and Transformation Plan

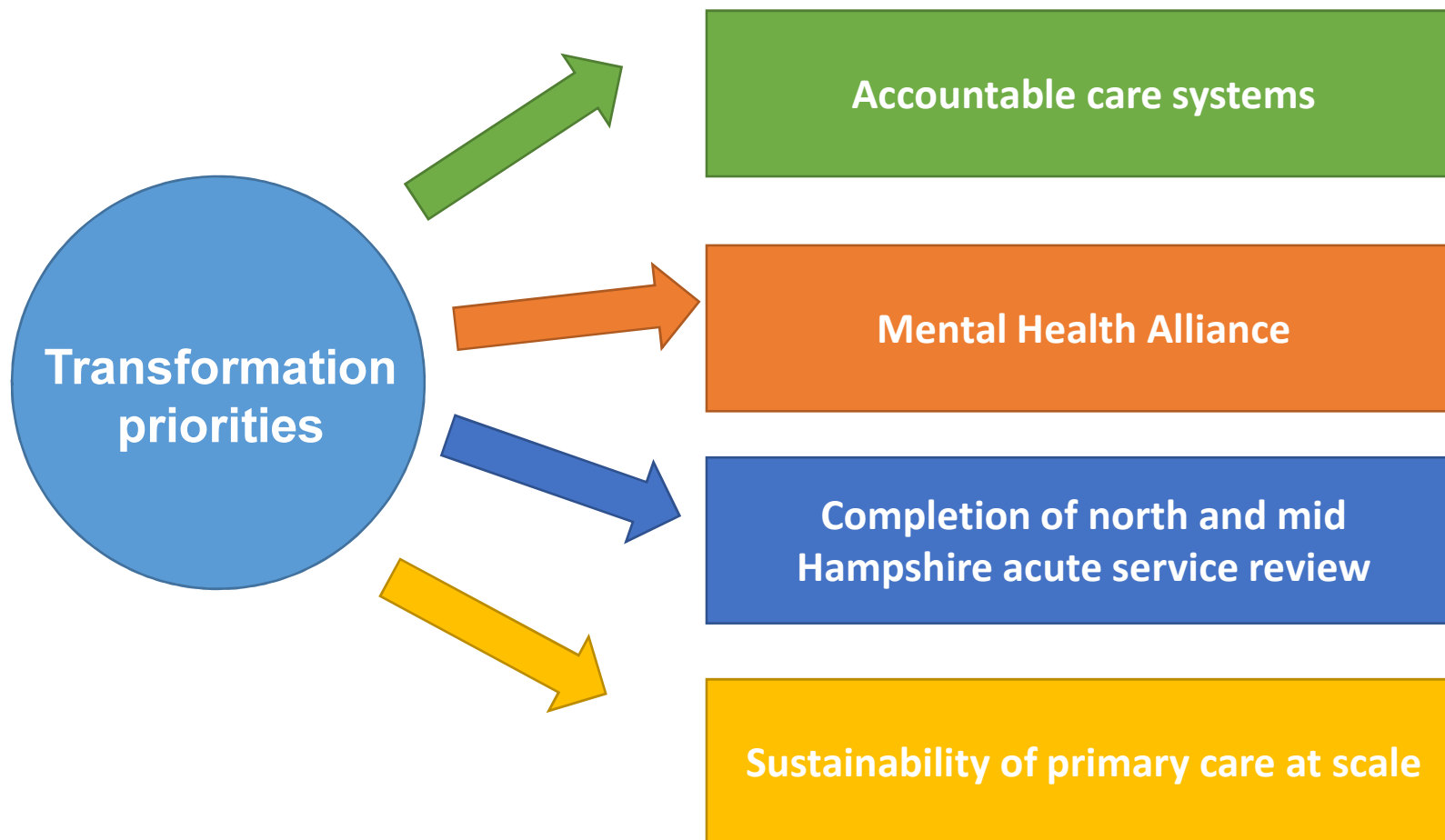
---

- Investing in prevention and supporting people to look after their own health
- Strengthening and investing in primary and community care
- Simplifying the urgent and emergency care system
- Improving the quality of hospital services
- Making tangible improvements to mental health services
- Creating a financially sustainable health system for the future

# Transformation priorities

---

Page 6



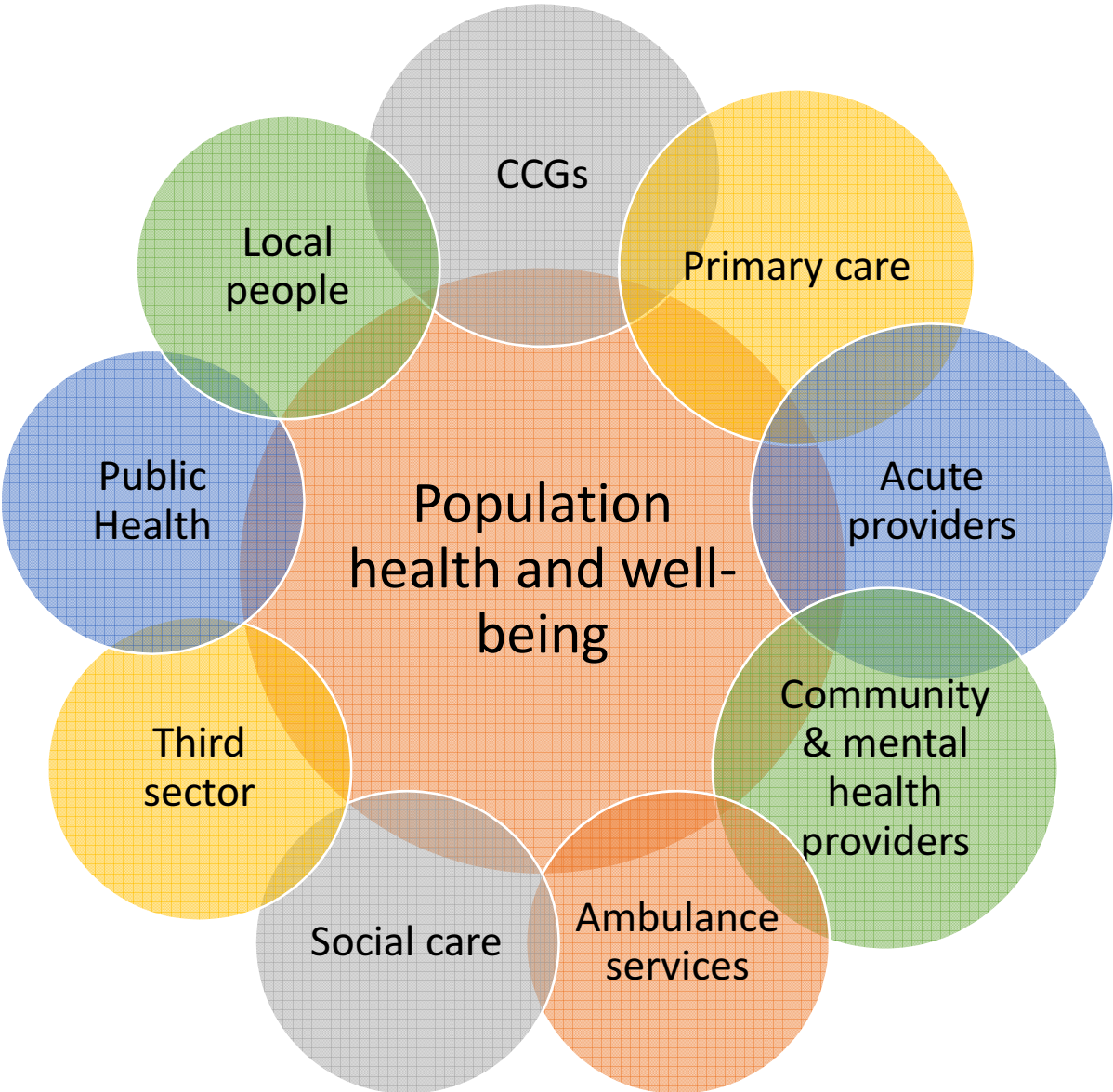
# Service redesign in four local care/delivery systems

Page 7





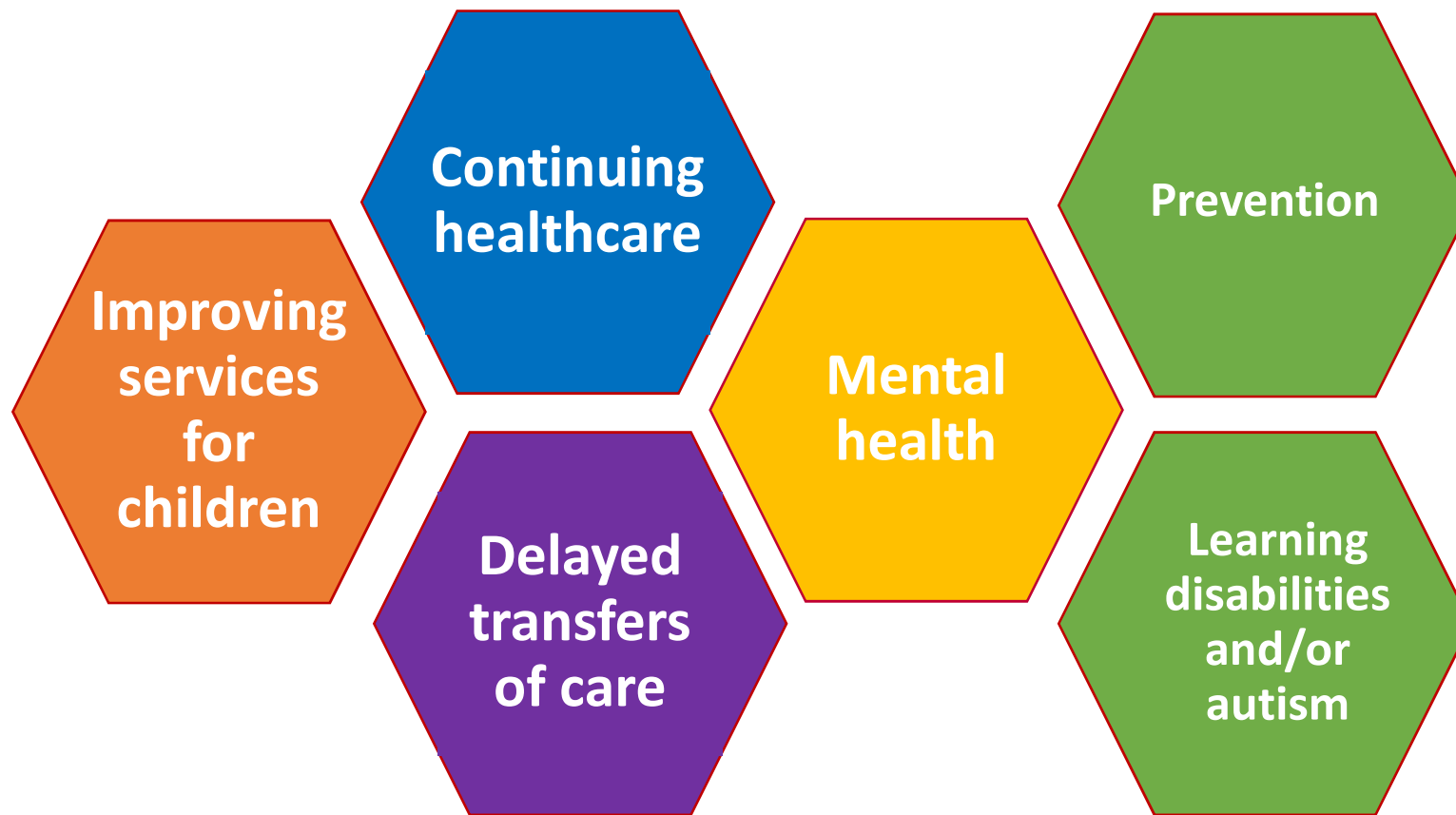
# Local delivery systems





# Priority areas for our joint work

---



# Involving our communities

---



# Future opportunities and challenges

---

- Stronger/closer working with local government
- New government – ongoing austerity
- Limited structural change
- Making better use of our estate
- Workforce
- Brexit
- Primary care
- New care models

**However working together is key to success**

This page is intentionally left blank